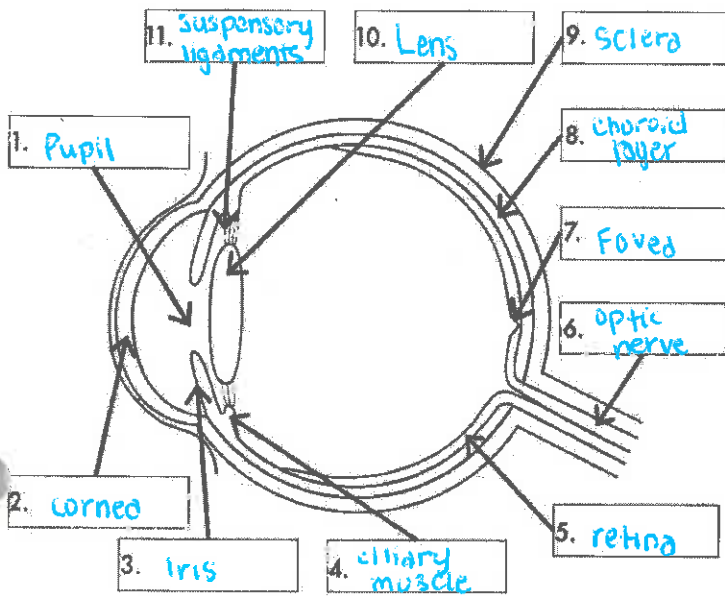


STRUCTURE OF THE EYE

Label the diagram of the eye below, with the structures given in the table to the right.



Structure in the eye	Function of the eye structure
<u>cornea</u>	thick convex outer layer Sends light to pupil
<u>pupil</u> (hole)	Sends light to lens
<u>retina</u> * *	layer that forms image
<u>optic nerve</u>	sends image to brain
<u>fovea</u>	focal point • clearest image
<u>ciliary muscle</u>	helps change focus (near/or far)
<u>suspensory ligaments</u>	holds lens in place
<u>lens</u>	convex • sends light to retina
<u>iris</u> (covers outer layer)	controls amount of light coming in
<u>choroid layer</u>	"feeds" eye oxygen blood
<u>sclera</u>	Thick/white protective outer layer

In the table, give a brief description of the function of each of the structures, you have labelled on the diagram of the eye above.

* Retina: very important area that "captures" light and helps us form an image + understand colour

Has specialize cells called

Photoreceptors

Rods

vision in low light (night)

• gets used to work

Green cones

Cones

colour vision

Red cones

blue cones

